



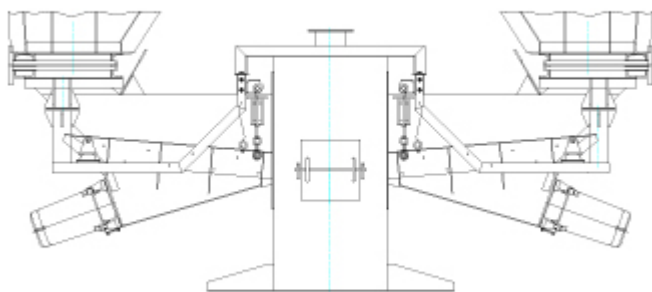
Hopper discharge unit in a steel plant for alloys

Product group: Hopper discharge unit

Industrial process: Discharging, feeding, conveying

Industry: Steel Production, Foundry Technology

Type of drive: magnetic vibrator



capacity (t/h): 100 | bulk: ferro alloys | density (t/m³): 2 | grain size (mm): 5 - 60
function:

Hopper discharge of ferro alloys in a steelmill with environmental temperature between -50°C up to +150°C.

solution:

OA 1320/420ASS MVE50-4 trough feeder and AB 400/400/1000 ASS discharge chute feeder driven by one off magnetic vibrator in tropical finish c/w special connection cable made of silicon. Trough made from special steel no. 1.0566 because of temperature -50° C.

usability:

Well known advantages of magnetic vibrator suitable for extreme environment.

place of installation: Russia