



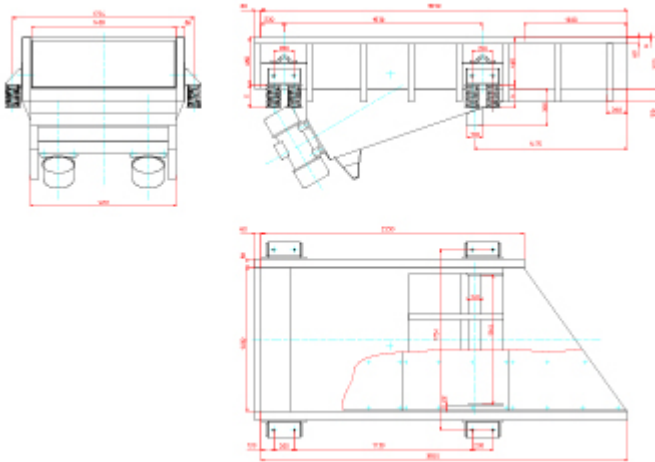
## Trough conveyor for woodrecycling

Product group: Trough conveyor

Industrial process: Discharging, feeding, conveying

Industry: Recycling, Environment, Glass

Type of drive: Unbalance motor



capacity (t/h): 50 | bulk: mixed wood | density (t/m<sup>3</sup>): 0,2 | grain size (mm): 0-350

function:

Transport of 50 t/h mixed wood installed in recycling plant, grain size up to 350 mm, including possibility by means of perforated plate for screening.

solution:

AViTEQ Trough conveyor with length of 3500mm and 2500mm and a width of 1400mm. Spezial lining an two unbalanced motors (UVH-46W). Trough is 500 mm high and supported on compression springs.

usability:

almost maintenance free operation designed for heavy duty and reliable operation.

place of installation: Germany