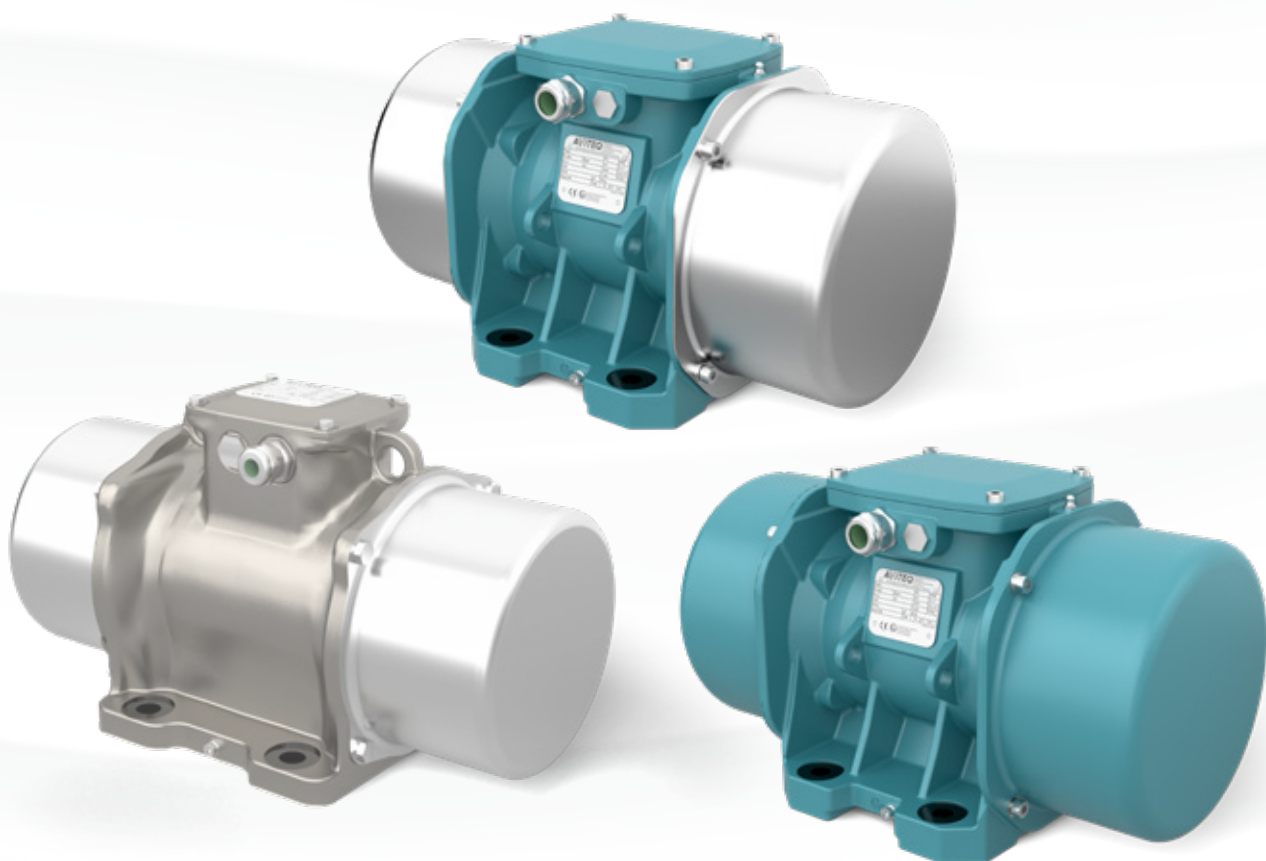




UNBALANCE MOTORS

Keeping bulk material on the move



AVITEQ VIBRATION TECHNOLOGY
We drive your success

For more than 85 years, AVITEQ Vibrationstechnik GmbH have provided oscillating conveyor solutions to almost 375,000 projects. Our extensive experience and vibrating conveyor expertise is evident with our 120 AVITEQ employees worldwide, who are always available to support our international client base.

Unshakeable Quality

AVITEQ systems and components feature comprehensive functionality including: conveying, sorting, dosing, screening, classifying and dewatering, compacting and loosening, cooling and heating of various bulk materials. We provide extremely varied solutions and can apply these to many different materials, from small pills and coffee beans, to rocks and metal pieces weighing tons.

Every bulk material has its own special requirements and AVITEQ have a vast array of experience, having designed systems and components for more than 1,000 different bulk materials to date. Endurance tests performed in our technical laboratories, and numerous finite element calculations, ensure the highest quality components and systems. Experience the unshakeable quality of AVITEQ.

AVITEQ
About us



120 employees worldwide



85 Years of experience



Expert advice for machine and motor design



large stock warehouse



International experiences

AVITEQ PRODUCT PORTFOLIO
Qualified partner for systems and components

AVITEQ plans and creates vibration and processing engineering solutions. A comprehensive all-round service is possible through AVITEQ and AEG.



Spiral Conveyors



Hopper Discharge Units



Vibrating Screens



Tubular feeders

AVITEQ
Components

AVITEQ develops, builds and distributes drive components and control systems for vibrating conveyor systems. We also offer 24-hour replacement part support from the spare part warehouse, as well as various repair services (in-house or on-site).



Unbalance Motors



Magnetic Vibrators



Parts Conveyors



Small Conveyors

Unbalance Motors

Unbalance motors by AVITEQ are specifically designed for the discharging and conveying of bulk materials over long distances, as well as screening and dewatering. Renown for high performance, the unbalance motors also offer maximum operational availability and durability. Suitable for 50/60 Hz networks. The following pages include additional information about the more than 50 applications types available.

UNBALANCE MOTORS BY AVITEQ

Performance with Loyalty

You can rely on powerful and reliable performance with unbalance motors by AVITEQ. The performance drive with a robust design also features numerous clever details. Moreover, our superior production quality ensures a longer operation life – one of the many reasons we have been loyally serving many clients for more than 20 years.

Regardless of its surroundings, the unbalance motors by AVITEQ deliver high performance with energy-efficient consumption. What's more, thermistor protection and tropicalization are series standards. Select models also meet requirements for ATEX directives for zones 21 and 22, as well as CSA Classes I and II. AVITEQ unbalance motors are engineered for long lasting performance.

PERFORMANCE DATA OVERVIEW

Centrifugal force range: 59 – 304,000 N

Working moment: 0.12 – 5.510 kgcm

Working weight: 1 – 11.250 kg

Rated Power: 0.03 – 27 KW

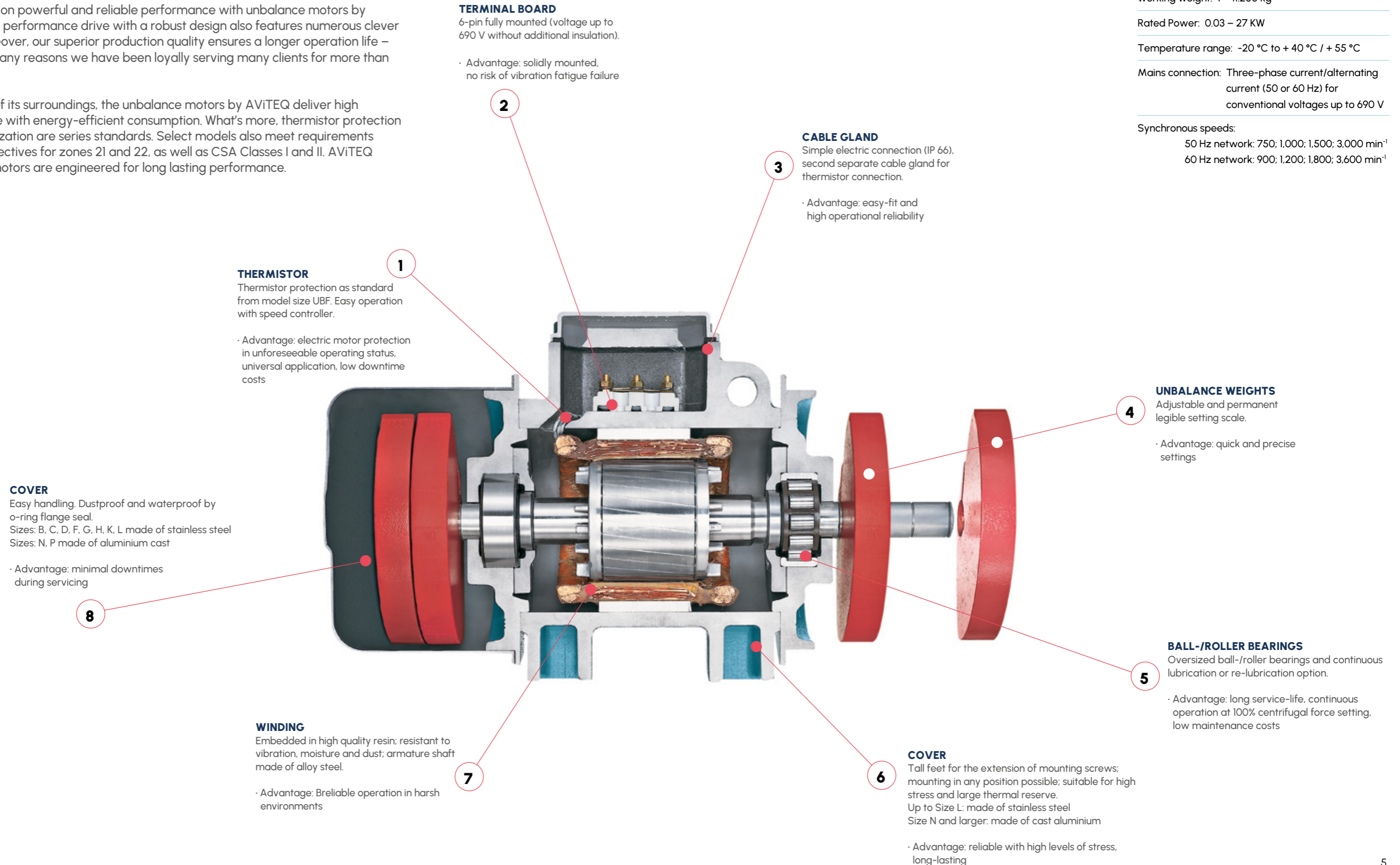
Temperature range: -20 °C to + 40 °C / + 55 °C

Mains connection: Three-phase current/alternating current (50 or 60 Hz) for conventional voltages up to 690 V

Synchronous speeds:

50 Hz network: 750; 1,000; 1,500; 3,000 min⁻¹

60 Hz network: 900; 1,200; 1,800; 3,600 min⁻¹



1 THERMISTOR

Thermistor protection as standard from model size UBF. Easy operation with speed controller.

- Advantage: electric motor protection in unforeseeable operating status, universal application, low downtime costs

2 TERMINAL BOARD

6-pin fully mounted (voltage up to 690 V without additional insulation).

- Advantage: solidly mounted, no risk of vibration fatigue failure

3 CABLE GLAND

Simple electric connection (IP 66), second separate cable gland for thermistor connection.

- Advantage: easy-fit and high operational reliability

4 UNBALANCE WEIGHTS

Adjustable and permanent legible setting scale.

- Advantage: quick and precise settings

5 BALL-/ROLLER BEARINGS

Oversized ball-/roller bearings and continuous lubrication or re-lubrication option.

- Advantage: long service-life, continuous operation at 100% centrifugal force setting, low maintenance costs

8 COVER

Easy handling. Dustproof and waterproof by o-ring flange seal.
 Sizes: B, C, D, F, G, H, K, L made of stainless steel
 Sizes: N, P made of aluminium cast

- Advantage: minimal downtimes during servicing

7 WINDING

Embedded in high quality resin; resistant to vibration, moisture and dust; armature shaft made of alloy steel.

- Advantage: Reliable operation in harsh environments

6 COVER

Tall feet for the extension of mounting screws; mounting in any position possible; suitable for high stress and large thermal reserve.
 Up to Size L: made of stainless steel
 Size N and larger: made of cast aluminium

- Advantage: reliable with high levels of stress, long-lasting



CERTIFICATES

Our safety standards

AVITEQ's electric vibration motors generate centrifugal forces of up to 26,000 kg and are available in a wide range of supply voltages. This allows them to cover numerous application areas in different countries and industries - from the food industry to mining, production plants, recycling and many more.

AVITEQ vibration motors are developed and manufactured using state-of-the-art technology and high-quality materials. Motor housings, bearing flanges and motor shafts in the FMA design are made of first-class aluminium alloys, cast iron and steel alloys, which ensures high load capacity and safe operation under all conditions. Vacuum-impregnated coils and class F insulation contribute to a long service life and high reliability. Quality bearings and an efficient grease seal guarantee long-lasting performance at low sound pressure levels. The adjustable eccentric masses allow precise adjustment of the maximum centrifugal force. For use in hazardous environments, AVITEQ also offers various certificates to meet even the strictest global requirements.

Protection class	Standard UB	Standard USA/CA fUB	Explosion protection eUB	Stainless steel pUB (Food)
CE ¹	yes	yes	yes	yes
IP protection class ²	IP66	IP66	IP66	IP66
ATEX ³	Zone 21, 22 ⁴	Zone 21, 22 ⁴	Zone 21, 22 ⁵ Zone 1, 2	Zone 22 ⁶
CSA/UL	-	Cl. II Div. 2 Gr. F,G ⁷	Cl. II Div. 2 Gr. F,G ⁸ Cl. I Div. 2 Gr. A,B,C,D	CRUUS ⁹
IECEX	Ex „tb“ ¹⁰	Ex „tb“-ETL Class II Div.2 ¹¹	Ex „tb“ „eb-ETL Class II Div.2“ ¹²	-

¹ according to Low Voltage Directive 2014/35/EU

² according to DIN EN 60529

³ according to the applicable directive 2014/34/EU (ATEX)

⁴ Ex II 2D Ex tb IIIC Tx Db IP66 / Ex tb IIIC Tx Db IP66

⁵ II 2G Ex eb IIC Tx Gb, II 2D Ex tb IIIC Tx Db IP66 / Ex eb IIC T3 Gb / Ex tb IIIC Tx Db IP66

⁶ Ex II 3D / Ex tc IIIC Tx Db IP66

⁷ CLASS II DIV.2 GROUP F,G T4 / Ex tb IIIC Tx Db IP66 - Cl. II Div. 1 Gr. E,F,G in planning

⁸ CLASS I DIV.2 GROUP A,B,C,D T3 / CLASS II DIV.2 GROUP F, G T4 / Ex ec IIC T3 Gb, Ex tb IIIC Tx Db IP66

⁹ correspond to UL1446 and CSA 22.2 Nr. 0-10

¹⁰ -20°C ≤ Tamb ≤ +55°C

¹¹ -20°C ≤ Tamb ≤ +40°C (max 600V)

¹² -20°C ≤ Tamb ≤ +40°C (max 500V)

WE LOVE DIVERSITY

Our additional options

Choose from various additional options to customize your motor to your needs:

- Stainless steel covers
- Split covers
- Customer-specific colour (also corrosion-resistant)
- Detectable STEEL-IT paint finish (food)
- Special voltage ranges
- Heating for the motor for cold ambient temperatures
- PT100 sensor for precise temperature monitoring
- Adapter plates for mounting with other hole patterns



DESIGN AND MOTOR SELECTION

The right motor in an instant

Design

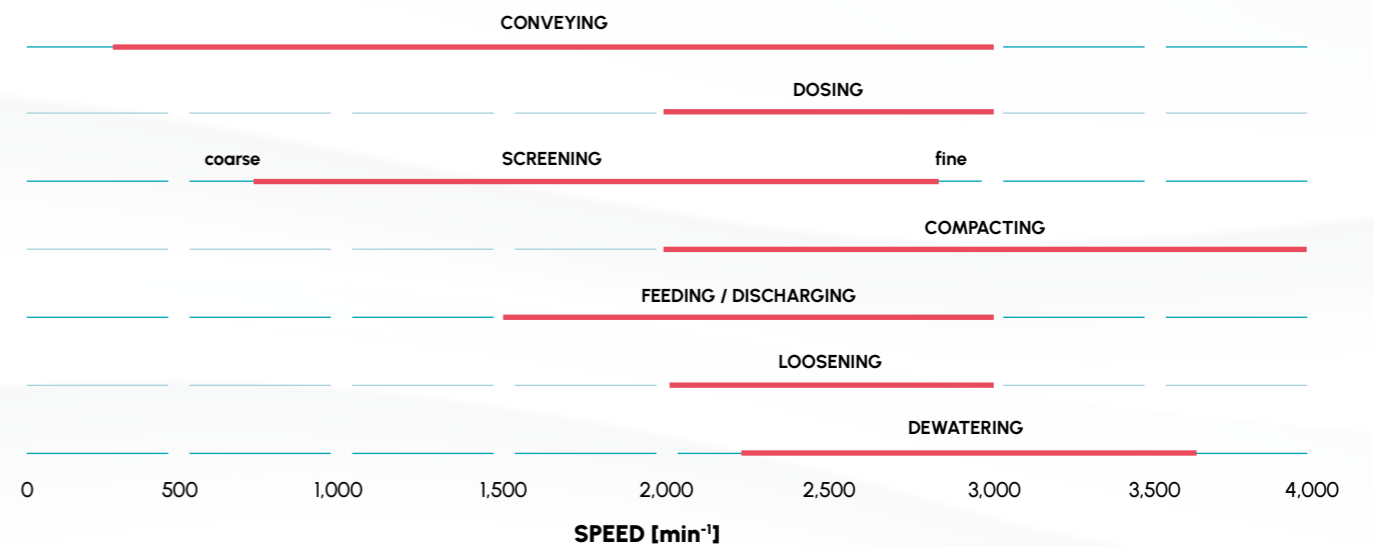
The vibration amplitude is the central benchmark in designing an unbalance motor. Together with acceleration of the respective frequency, the vibration amplitude delivers the power, which flows from the drive to the working unit. The motor characteristics on the next page demonstrate the optimal motor. The diagrams give you a quick and easy overview of the vibration amplitudes for all motor types, in relation to working weights.

Direction of Rotation

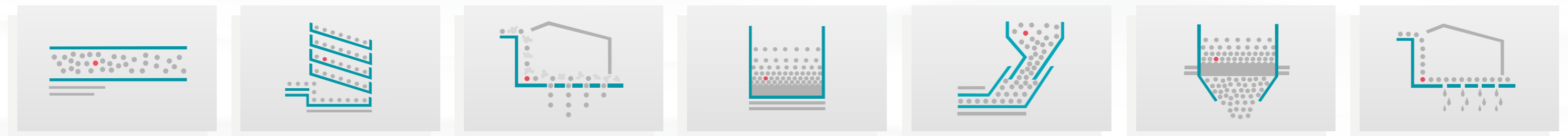
To ensure linear vibrations on longitudinal conveyors, such as trough feeders or vibrating screens, at least two motors with counter-rotating directions are required. Devices with torsional vibration, however, require drives with the same direction of rotation. It is vital that such intricate details are correct, as even short-term inaccurate operation can cause major damage to working units.

The mounting of the motor must take place on a rigid drive part, to avoid the significant risk of breaking. Furthermore, the motors cannot synchronize automatically and would exceed the energy consumption limitations. With large and long-distance longitudinal conveyors, cross vibration monitoring is used to ensure proper rotation at all times.

Step 1 to the right motor: functionality

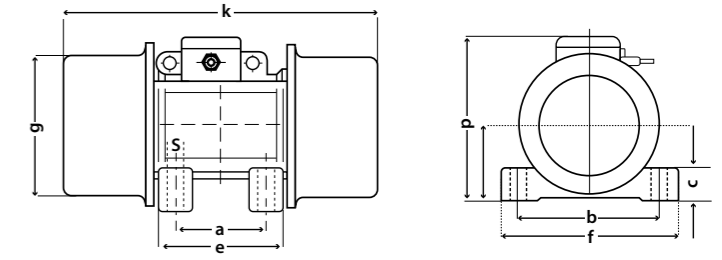


Depending on the type of application, vibration amplitudes and acceleration values are calculated based on the nominal speed in the relevant network



2-pole and 4-pole motors

2-pole (50/60 Hz)



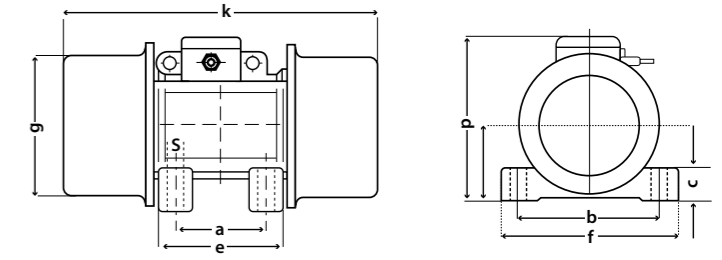
Standard (f)UB	increased security eUB	I12D Temp. Class [°C]	Centrifugal force [N]		Working moment [kgcm]		Working weight range with 2x UB [kg]		Rated Current max. [A]		Rated Power [kW]		Dimensions [mm]						Weight [kg]		Screws						
			50Hz	60Hz	50Hz	60Hz	50Hz	60Hz	50Hz 400V	60Hz 460V	50Hz	60Hz	a	b	c	e	f	g	h	k		k ^{1GH}	k ^{2GH}	p	s	50Hz	60Hz
UBIA 0,06Y-1	-	100	59	88	0.12	0.12	impact vibrator	impact vibrator	0.3 (230V)	0.8 (115V)	0.03	0.04	25 - 40	75	10	74	90	70	39	145	-	-	76	6.5	1.6		M5
UBA 0,7Y-1	-	100	650	700	1.3	1.0	15-56	10-58	0.25	0.23	0.09	0.09	62.5	95	11	107	130	86	50	213	-	-	135	11	4.2		M10
UBB 1Y-1	-	100	960	930	2.0	1.3	18-90	18-80	0.25	0.23	0.09	0.09	68	106	11	107	130	86	50	213	-	-	135	9	5		M8
UBB 1,8Y-1	+	100	1,830	1,850	3.7	2.6	36-172	37-170	0.35	0.30	0.15	0.18	68	106	12	125	130	110	65	233	-	-	154	9	7		M8
UBC 3,2Y-1	+	100	3,150	3,170	6.4	4.5	64-300	65-300	0.52	0.45	0.25	0.28	90	125	15	166	150	135	79	255	-	-	173	13	9.8		M12
UBD 5,2Y-1	+	135	5,200	5,240	10.3	7.4	100-480	100-460	0.96	0.97	0.50	0.58	105	140	20	166	170	160	92	330	-	-	196	13	15.8		M12
UBE 7,8Y-1	+	135	7,800	7,850	15.7	11.1	170-735	160-700	1.45	1.50	0.70	0.84	120	170	22	192	208	169	96	321	-	-	210	17	20		M16
UBE 9,9Y-1	+	135	9,900	9,940	20.2	14.0	210-970	210-900	1.85	1.95	0.95	1.15	120	170	22	192	208	169	96	321	-	-	210	17	21		M16
UBF 23Y-1	+	135	22,600	22,600	46.0	31.9	470-2,170	480-1,580	4.44	3.45	2.40	2.45	125	210	29	210	255	222	126	402	-	-	267	17	53	51	M16
UBG 32Y-1	+	135	31,900	31,200	68.1	43.9	615-3,170	570-2,700	5.30	4.61	2.76	2.90	165	260	30	277	304	265	147	516	-	-	314	26	103	101	M24
UBH 40Y-1	-	135	40,330	41,170	81.8	58.0	695-3,760	735-3,550	9.43	8.20	5.23	5.50	280	290	35	364	360	311	175	662	-	-	362	25	165	163	M24
UBL 64Y-1	-	135	63,900	64,300	129.5	90.5	1,165-6,000	1,185-5,570	9.50	9.50	5.50	6.30	200	320	40	360	385	378	203	624	-	-	402	28	228	230	M27
UBL 89Y-1	-	135	88,500	92,000	179.6	129.6	1,770-8,500	1,860-8,870	11.5	11.5	6.60	7.70	200	320	40	360	385	378	203	624	-	-	402	28	240	235	M27

4-pole (50/60 Hz)

Standard (f)UB	increased security eUB	I12D Temp. Class [°C]	Centrifugal force [N]		Working moment [kgcm]		Working weight range with 2x UB [kg]		Rated Current max. [A]		Rated Power [kW]		Dimensions [mm]						Weight [kg]		Screws						
			50Hz	60Hz	50Hz	60Hz	50Hz	60Hz	50Hz 400V	60Hz 460V	50Hz	60Hz	a	b	c	e	f	g	h	k		k ^{1GH}	k ^{2GH}	p	s	50Hz	60Hz
UBB 0,3X-1	-	100	250	350	2.0	2.0	3-20	3-25	0.31	0.31	0.05	0.04	68	106	11	107	130	86	50	213	-	-	135	9	4.6		M8
UBB 0,7X-1	-	100	740	750	6.0	4.2	8-68	7-58	0.31	0.25	0.07	0.08	68	106	12	112	130	110	65	233	-	-	154	9	7.4		M8
UBC 1,9X-1	+	100	1900	1920	15.4	10.8	27-180	30-160	0.49	0.50	0.12	0.15	90	125	15	166	150	134	79	275	-	-	173	13	11.8		M12
UBD 4,1X-1	+	135	4,100	4,150	33.4	23.4	72-410	75-360	0.84	0.86	0.27	0.32	105	140	20	166	170	160	92	330	-	-	196	13	19.5		M12
UBD 5X-1	+	135	4,950	5,000	40.1	28.1	90-495	82-460	1.06	1.09	0.35	0.4	105	140	20	166	170	160	92	330	-	-	196	13	21		M12
UBE 7X-1	+	135	7,000	7,000	56.8	39.4	135-705	125-605	1.32	1.20	0.62	0.73	120	170	22	192	208	169	96	391	-	-	210	17	27		M16
UBE 11X-1	+	135	10,800	10,900	87.7	61.4	205-1,045	215-975	1.40	1.35	0.64	0.77	120	170	25	192	208	187	105	414	-	-	220	17	35	28.5	M16
UBF 17X-1	+	135	16,900	16,300	137.3	92.0	325-1,670	260-1,380	2.16	2.09	1.13	1.3	125	210	29	210	255	222	126	446	521	552	267	17	67.5	64	M16
UBF 23X-1	+	135	23,100	24,400	187.7	137.4	475-2,330	480-2,150	3.20	3.20	1.57	1.88	125	210	29	210	255	222	126	490	521	552	267	17	77	70	M16
UBG 38X-1	+	135	37,800	36,300	306.7	204.7	770-3,820	650-3,160	4.15	4.15	2.20	2.6	165	260	30	277	304	265	147	564	656	748	314	26	125	113	M24
UBH 54X-1	+	135	53,900	53,900	437.4	303.7	1,070-5,440	990-4,700	6.50	5.50	2.88	3.45	280	290	35	366	360	311	175	662	753	844	361	25	194	182	M24
UBL 72X-1	+	135	71,500	72,100	579.9	406.0	1,470-7,270	1,380-7,310	11.00	10.80	6.00	6.50	200	320	40	360	385	378	203	624	675	726	402	28	233	228	M27
UBN 103X-1	-	135	103,000	103,200	835.7	581.3	2,190-10,550	2,010-9,110	13.10	13.10	7.00	8.20	2x 125	380	40	380	452	378	205	728	865	1002	415	39	300	286	6xM36
UBP 116X-1	-	135	115,750	116,300	939.0	655.0	2,240-11,630	2,065-10,075	15.50	15.50	9.00	10.00	2x 140	440	37	463	530	433	232	890	986	1082	482	45	445	422	6xM42

6-pole and 8-pole motors

6-pole (50/60 Hz)

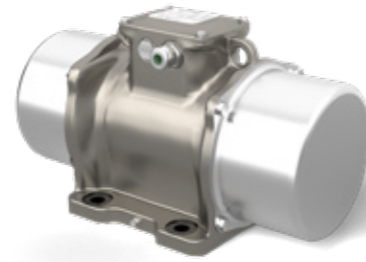


Standard (f)UB	increased security eUB	I12D Temp. Class [°C]	Centrifugal force [N]		Working moment [kgcm]		Working weight range with 2x UB [kg]		Rated Current max. [A]		Rated Power [kW]		Dimensions [mm]								Weight [kg]						
			50Hz	60Hz	50Hz	60Hz	50Hz	60Hz	50Hz 400V	60Hz 460V	50Hz	60Hz	a	b	c	e	f	g	h	k	k ^{1GH}	k ^{2GH}	p	s	50Hz	60Hz	Screws
UBE 3.1W-1	+	135	3100	3100	56.9	39.9	35-232	32-215	0.67	0.64	0.25	0.30	120	170	22	192	208	169	96	391	-	-	210	17	26		M16
UBE 5W-1	+	135	5000	5100	91.9	64.3	73-390	60-360	1.22	1.15	0.55	0.40	120	170	22	192	208	169	96	455	-	-	210	17	34		M16
UBF 10W-1	+	135	10,300	10,800	187.7	137.3	130-780	130-760	1.42	1.32	0.75	0.80	125	210	29	210	255	222	126	490	521	552	267	17	78	72	M16
UBF 16W-1	+	135	15,600	15,500	284.8	196.5	270-1,260	245-1,165	1.80	2.00	0.90	1.08	125	210	29	210	255	222	126	566	559	552	267	17	84	73	M16
UBG 21W-1	+	135	20,800	24,200	380	306.7	305-1,615	360-1,790	4.50	4.00	2.20	2.10	165	260	30	277	304	265	147	612	656	748	314	26	138	127	M24
UBG 30W-1	+	135	29,600	29,900	540.3	379.7	520-2,400	480-2,250	4.50	4.30	2.20	2.40	165	260	30	277	304	265	147	692	720	748	314	26	155	138	M24
UBH 37W-1	+	135	37,300	34,500	680.4	437.4	585-2,940	460-2,500	5.50	5.30	2.50	3.00	280	290	36	366	360	311	175	742	792	844	361	25	229	208	M24
UBH 46W-1	+	135	46,000	46,100	838.3	584.2	820-3,725	740-3,465	6.50	6.95	3.20	3.90	280	290	36	366	360	311	175	792	818	844	361	25	234	215	M24
UBL 64W-1	+	135	63,800	65,000	1165	824	1,215-5,250	1,120-4,965	7.76	7.81	4.30	5.00	200	320	40	360	385	378	203	704	715	726	402	28	288	265	M27
UBK 79W-1	+	135	78,500	73,300	1434	930	1,545-6,510	1,270-5,620	9.00	10.00	4.60	5.50	280	400	33	387	465	378	203	812	914	1016	403	32	330	295	M30
UBN 99W-1	+	135	98,800	97,800	1803	1240	2,025-8,270	1,760-7,580	13.00	14.50	6.40	7.70	2x125	380	40	380	452	378	205	908	955	1002	415	39	374	348	6xM36
UBN 113W-1	+	135	112,700	113,000	2057	1433	2,355-9,485	2,150-8,850	13.00	14.50	6.40	7.70	2x125	380	40	380	452	378	205	908	955	1002	415	39	404	361	6xM36
UBN 127W-1	-	135	126,600	130,000	2311	1647	2,675-10,660	2,515-10,220	17.20	18.10	8.00	8.90	2x125	380	40	380	452	378	205	948	975	1002	415	39	440	393	6xM36
UBP 123W-1	-	135	123,400	122,300	2253	1550	2,425-10,200	2,150-9,360	15.00	15.00	8.00	9.50	2x140	440	37	463	530	433	232	1020	1051	1082	482	45	522	476	6xM42
UBR 144W-1	-	135	144,300	146,400	2634	1856	2,700-11,850	2,450-11,100	18.00	18.00	10.10	12.00	3x140	480	48	550	570	496	268	980	1049	1118	540	45	672	630	8xM42
UBR 176W-1	-	135	176,400	169,400	3220	2147	3,450-14,600	2,920-13,000	21.00	21.00	11.90	14.20	3x140	480	48	550	570	496	268	1060	1089	1118	540	45	744	684	8xM42
UBR 199W-1	-	135	199,000	199,000	3632	2525	4,050-16,600	3,600-15,400	24.00	24.00	12.00	14.50	3x140	480	48	550	570	496	268	1060	1089	1118	540	45	768	728	8xM42
UBT 223W-1	-	135	223,000	207,000	4067	2622	4,430-18,450	3,520-15,750	28.00	28.00	13.95	17.00	3x140	520	42	554	610	552	297	1138	1171	1204	597	45	916	868	8xM42
UBT 250W-1	-	135	250,000	250,000	4572	3163	5,050-20,750	4,470-19,270	28.00	28.00	13.95	17.00	3x140	520	42	554	610	552	297	1138	1171	1204	597	45	994	937	8xM42
UBU 302W-1	-	135	302,000	304,000	5510	3857	6,150-25,350	5,530-23,650	39.00	39.00	22.60	27.00	3x140	600	45	570	700	602	320	1167	-	-	636	45	1158	1090	8xM42

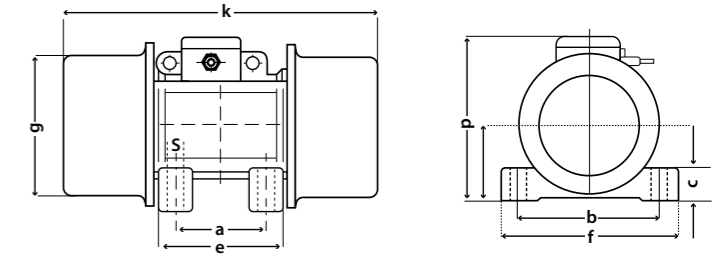
8-pole (50/60 Hz)

Standard (f)UB	increased security eUB	I12D Temp. Class [°C]	Centrifugal force [N]		Working moment [kgcm]		Working weight range with 2x UB [kg]		Rated Current max. [A]		Rated Power [kW]		Dimensions [mm]								Weight [kg]						
			50Hz	60Hz	50Hz	60Hz	50Hz	60Hz	50Hz 400V	60Hz 460V	50Hz	60Hz	a	b	c	e	f	g	h	k	k ^{1GH}	k ^{2GH}	p	s	50Hz	60Hz	Screws
UBF 5.8V	+	135	5,800	8,300	188	188	100-330	215-525	1.23	1.29	0.55	0.54	125	210	29	210	255	222	126	490	521	552	267	17	70		M16
UBF 9V	+	135	-	-	-	-	-	-	-	-	-	-	-	-	-	-	-	-	-	-	-	-	-	-	-	-	-
UBG 14V-1	+	135	14,400	20,700	467	467	165-885	370-1,390	2.81	2.89	1.00	1.20	165	260	30	277	304	265	147	692	656	748	314	26	150		M24
UBH 21V-1	+	135	21,000	30,200	680	680	275-1,310	580-2,075	4.50	4.40	2.00	2.30	280	290	36	366	360	311	175	742	792	844	361	25	201		M24
UBH 26V-1	+	135	25,800	37,200	838	838	400-1,660	770-2,610	6.00	6.00	2.50	3.00	280	290	36	366	360	311	175	792	817	842	361	25	219		M24
UBL 36V-1	+	135	35,900	51,700	1,165	1,165	585-2,335	1,100-3,700	8.00	8.20	3.70	4.30	200	320	40	360	385	378	203	704	715	726	402	28	289		M27
UBK 44V-1	+	135	44,200	63,700	1,434	1,434	775-2,925	1,400-4,575	8.30	8.30	3.90	4.70	280	400	33	387	465	378	203	812	914	1016	403	32	330		M30
UBN 71V-1	+	135	71,200	102,500	2311	2,311	1,465-4,935	2,480-7,560	14.40	14.00	6.00	7.00	2x125	380	40	380	452	378	205	948	975	1002	415	39	422		6x M36
UBP 87V-1	-	135	87,300	113,300	2,835	2,553	1,695-5,950	2,590-8,175	13.50	13.50	7.50	8.00	2x140	440	37	463	530	433	232	1020	1051	1082	482	45	571	553	6x M42

Stainless steel motors



- Smooth housing design
- Protection of the terminal box
- Water and moisture resistant



2-pole (50/60 Hz)

Standard	increased security	II2D Temp. Class	Centrifugal force [N]		Working moment [kgcm]		Working weight range with 2x UB [kg]		Rated Current max. [A]		Rated Power [kW]		Dimensions [mm]						Weight [kg]								
			pUB	eUB	[°C]	50Hz	60Hz	50Hz	60Hz	50Hz	60Hz	50Hz 400V	60Hz 460V	50Hz	60Hz	a	b	c	e	f	g	h	k	k ^{1GH}	k ^{2GH}	p	s
pUBC 3.2Y	-	100	3,150	3,170	6.4	4.5	50-290	50-290	0.52	0.45	0.25	0.28	90	125	17	164	156	134	82	253	-	-	157	13	16		M12
pUBD 7.4Y	-	135	7,440	7,500	14.9	10.6	145-700	145-700	1.25	1.24	0.59	0.61	105	140	14	174	170	156	92	333	-	-	204	13	25		M12
pUBE 7.8Y	-	135	7,800	7,850	15.7	11.1	145-720	160-780	1.45	1.50	0.70	0.84	120	170	18	197	208	165	96	324	-	-	223	17	32	31	M16

4-pole (50/60 Hz)

Standard	increased security	II2D Temp. Class	Centrifugal force [N]		Working moment [kgcm]		Working weight range with 2x UB [kg]		Rated Current max. [A]		Rated Power [kW]		Dimensions [mm]						Weight [kg]								
			pUB	eUB	[°C]	50Hz	60Hz	50Hz	60Hz	50Hz	60Hz	50Hz 400V	60Hz 460V	50Hz	60Hz	a	b	c	e	f	g	h	k	k ^{1GH}	k ^{2GH}	p	s
pUBC 1.9X	-	100	1900	1920	15.4	10.8	25-170	25-170	0.49	0.50	0.12	0.15	90	125	17	164	156	134	82	298	-	-	157	13	18.5		M12
pUBD 5X	-	135	4,950	5,000	40.1	28.1	75-480	75-480	1.06	1.09	0.35	0.4	105	140	14	174	170	156	92	333	-	-	204	13	30		M12
pUBE 7X	-	135	7,000	7,000	56.8	39.4	110-680	110-680	1.32	1.20	0.62	0.73	120	170	18	197	208	165	96	388	-	-	223	17	39		M16
pUBE 11X	-	135	10,900	11,000	88.7	62	200-1,075	200-1,075	1.40	1.35	0.64	0.77	120	170	18	192	208	170	96	458	-	-	223	17	47		M16
pUBIF 13X	-	135	13,400	13,600	108.6	76.7	230-1,325	230-1,325	1.78	1.78	0.70	0.73	140	190	26	218	230	221	96	445	-	-	250	17	65		M16
pUBIF 23X	-	135	23,100	24,400	187.7	137.4	485-2,330	485-2,330	3.20	3.20	1.57	1.88	140	190	26	218	230	221	96	489	-	-	250	17	70		M16

6-pole (50/60 Hz)

Standard	increased security	II2D Temp. Class	Centrifugal force [N]		Working moment [kgcm]		Working weight range with 2x UB [kg]		Rated Current max. [A]		Rated Power [kW]		Dimensions [mm]						Weight [kg]								
			pUB	eUB	[°C]	50Hz	60Hz	50Hz	60Hz	50Hz	60Hz	50Hz 400V	60Hz 460V	50Hz	60Hz	a	b	c	e	f	g	h	k	k ^{1GH}	k ^{2GH}	p	s
pUBD 1.8W	-	135	1,800	1,800	33.5	23.4	20-110	20-100	0.65	0.62	0.15	0.18	105	140	14	174	170	156	92	333	-	-	204	13	28		M12
pUBE 5W	-	135	5,000	7,250	91.9	91.9	50-370	90-520	0.67	1.15	0.55	0.40	120	170	18	192	208	170	96	458	-	-	223	17	46		M16
pUBIF 8W	-	135	7,500	8,600	137.4	108.6	90-570	100-610	1.42	1.32	0.75	0.80	140	190	26	218	230	221	124	445	-	-	250	17	60	58	M16
pUBIF 16W	-	135	15,600	15,500	284.8	196.5	270-1,250	250-1,150	1.80	2.00	0.90	1.08	140	190	26	218	230	221	124	565 489	-	-	250	17	84	73	M16

8-pole (50/60 Hz)

Standard	increased security	II2D Temp. Class	Centrifugal force [N]		Working moment [kgcm]		Working weight range with 2x UB [kg]		Rated Current max. [A]		Rated Power [kW]		Dimensions [mm]						Weight [kg]								
			pUB	eUB	[°C]	50Hz	60Hz	50Hz	60Hz	50Hz	60Hz	50Hz 400V	60Hz 460V	50Hz	60Hz	a	b	c	e	f	g	h	k	k ^{1GH}	k ^{2GH}	p	s
pUBD 1.1V	-	135	1,050	1,500	33.4	33.4	10-28	20-65	1.14	1.14	0.23	0.25	105	140	14	174	170	156	92	333	-	-	204	13	28		M12
pUBE 2.6V	-	135	2,600	3,700	84.0	84.0	40-120	100-210	0.90	0.89	0.25	0.30	120	170	18	192	208	170	96	458	-	-	223	17	46		M16
pUBIF 4.2V	-	135	4,200	6,100	137.3	137.3	90-220	100-370	1.20	1.20	0.37	0.45	140	190	26	218	230	221	124	445	-	-	250	17	63		M16
pUBIF 5.8V	-	135	5,800	8,300	187.7	187.7	95-330	100-540	1.23	1.29	0.55	0.54	140	190	26	218	230	221	124	489	-	-	250	17	70		M16

WE ARE THERE FOR YOU

Get in touch with us!

 +49 6145 503 0

 sales@aviteq.com

 AVITEQ Vibrationstechnik GmbH
Im Gotthelf 16
D-65795 Hattersheim